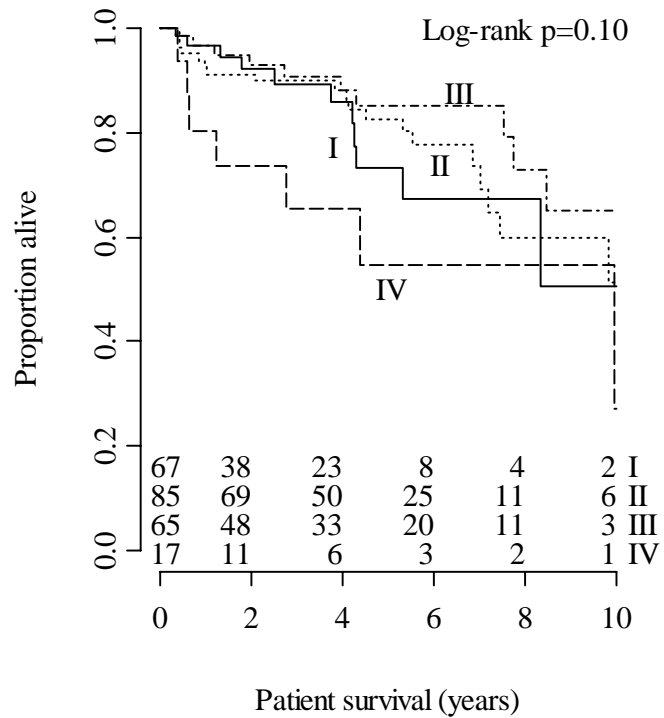


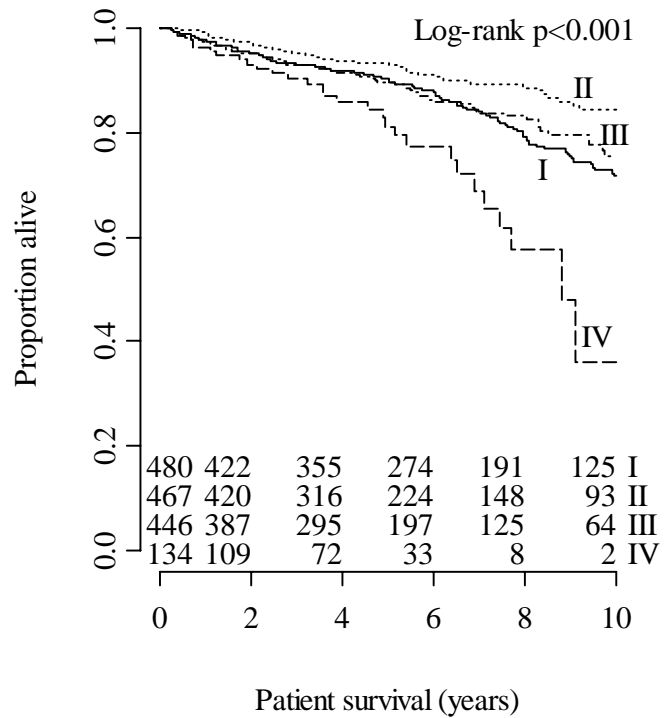
**Patient survival (graft-loss-censored; N=1829, 312 events)**

**Kaplan-Meier analysis**

CNI-:

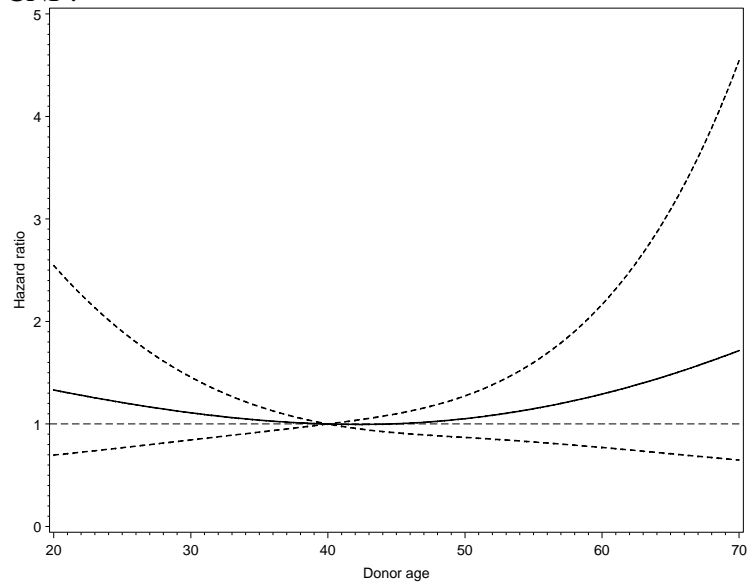


CNI+:

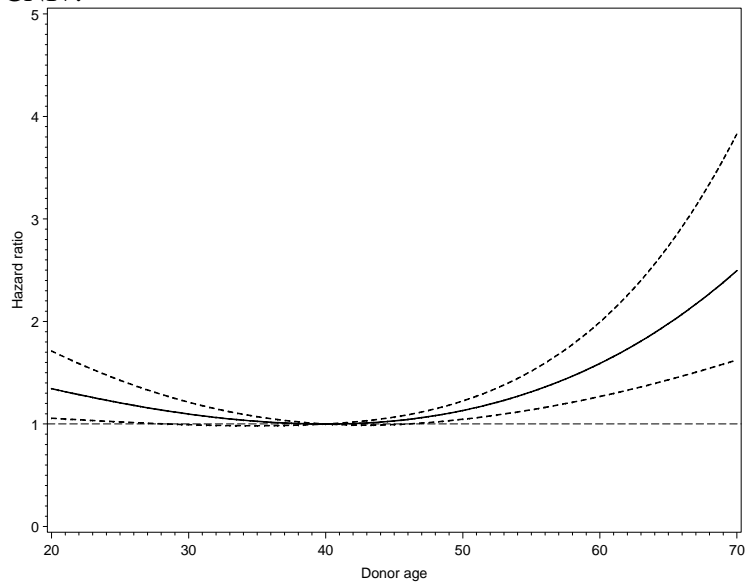


### Crude hazard ratios

CNI-:



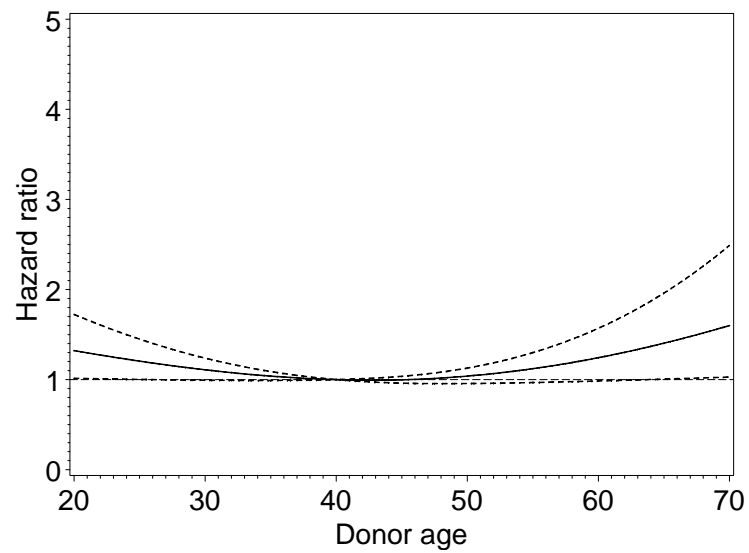
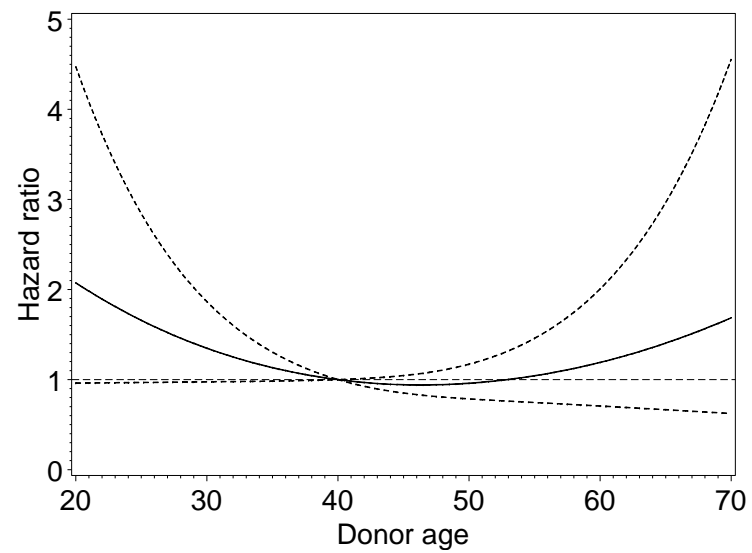
CNI+:



Parameter	Hazard Ratio	Lower 95% CL HR	Upper 95% CL HR	Pr >  t
immg90	0.48380	0.20984	1.11542	0.0884
noCA_DA1	0.46555	0.17658	1.22743	0.1222
noCA_DA2	0.40810	0.16844	0.98872	0.0471
noCA_DA3	0.32887	0.12650	0.85496	0.0225
CA_DA1	0.50100	0.33066	0.75909	0.0011
CA_DA2	0.30080	0.19174	0.47189	<.0001
CA_DA3	0.44047	0.28526	0.68012	0.0002

**Adjusted hazard ratios**

CNI- (model only including rec-age, heart/vascular disease, cholesterol): CNI+:



Full model, excluding mediators (DGF, BCAR, Crea90):

Parameter	Hazard Ratio	Lower	Upper	Pr >  t
		95% CL HR	95% CL HR	
immg90	0.34690	0.14481	0.83104	0.0176
noCA_DA1	0.66214	0.24145	1.81581	0.4230
noCA_DA2	0.50892	0.20155	1.28503	0.1528
noCA_DA3	0.44997	0.16713	1.21149	0.1140
CA_DA1	0.78674	0.50638	1.22231	0.2859
CA_DA2	0.52662	0.32906	0.84279	0.0075
CA_DA3	0.71815	0.45929	1.12293	0.1466
age_tpl10	1.64906	1.48127	1.83585	<.0001
khk	1.02896	0.71756	1.47552	0.8755
cmp	1.17957	0.80738	1.72332	0.3911
vascid1	1.17557	0.78713	1.75569	0.4261
vascid2	1.39943	0.99913	1.96012	0.0506
year_tpl	0.95111	0.91517	0.98846	0.0108
dialysezeit	1.03278	0.97139	1.09805	0.3022
cholest10	1.00470	0.98803	1.02166	0.5822
map10	1.01592	0.98411	1.04876	0.3289
diabetes	1.45234	1.09916	1.91900	0.0087

Test for interaction of donorage-groups and IS: p=0.75

## Model including mediators:

Parameter	Hazard Ratio	Lower 95% CL HR	Upper 95% CL HR	Pr >  t
immg90	0.32732	0.13582	0.78881	0.0128
noCA_DA1	0.65978	0.23644	1.84111	0.4268
noCA_DA2	0.55325	0.21545	1.42066	0.2184
noCA_DA3	0.41898	0.15335	1.14472	0.0898
CA_DA1	0.90707	0.56129	1.46585	0.6904
CA_DA2	0.57869	0.35608	0.94046	0.0273
CA_DA3	0.75199	0.47920	1.18006	0.2150
age_tpl10	1.65963	1.48869	1.85020	<.0001
khk	1.02383	0.70864	1.47919	0.8992
cmp	1.18815	0.81249	1.73751	0.3718
vascid1	1.17116	0.77944	1.75976	0.4435
vascid2	1.40731	1.00847	1.96387	0.0445
year_tpl	0.94746	0.91120	0.98516	0.0067
dialysezeit	1.03261	0.97120	1.09790	0.3050
cholest10	1.00571	0.98881	1.02290	0.5096
map10	1.01593	0.98423	1.04865	0.3269
diabetes	1.44816	1.09665	1.91234	0.0091
bcar	0.87559	0.34655	2.21222	0.7787
dgf	1.16123	0.85692	1.57359	0.3349
logcreat90	1.14115	0.99373	1.31044	0.0614

Test for interaction of donorage-groups and IS: p=0.61

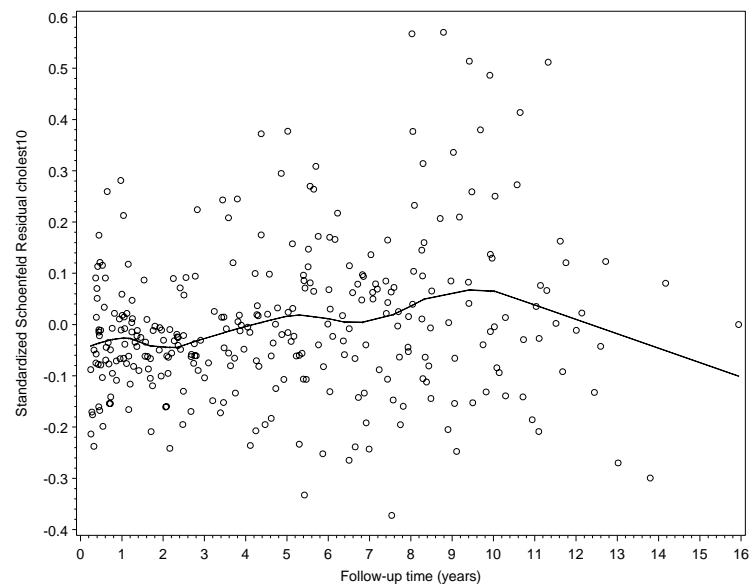
## Different parametrization:

Parameter	Hazard Ratio	Lower 95% CL HR	Upper 95% CL HR	Pr >  t
donorage1	0.63510	0.23467	1.71884	0.3714
donorage2	0.48336	0.19399	1.20439	0.1186
donorage3	0.43676	0.16258	1.17334	0.1004
IS_DA1	0.41784	0.22117	0.78939	0.0072
IS_DA2	0.36331	0.21343	0.61847	0.0002
IS_DA3	0.54504	0.28323	1.04888	0.0692
IS_DA4	0.32683	0.13671	0.78135	0.0119
age_tp10	1.64977	1.48283	1.83551	<.0001
khk	1.01920	0.73492	1.41345	0.9088
cmp	1.18168	0.81131	1.72113	0.3825
vascid1	1.16545	0.78938	1.72067	0.4384
vascid2	1.42422	1.02285	1.98310	0.0364
year_tp1	0.95359	0.91766	0.99093	0.0153
dialysezeit	1.03456	0.97315	1.09984	0.2765
cholest10	1.00731	0.98960	1.02534	0.4199
map10	1.01453	0.98403	1.04596	0.3532
diabetes	1.42963	1.08702	1.88021	0.0106

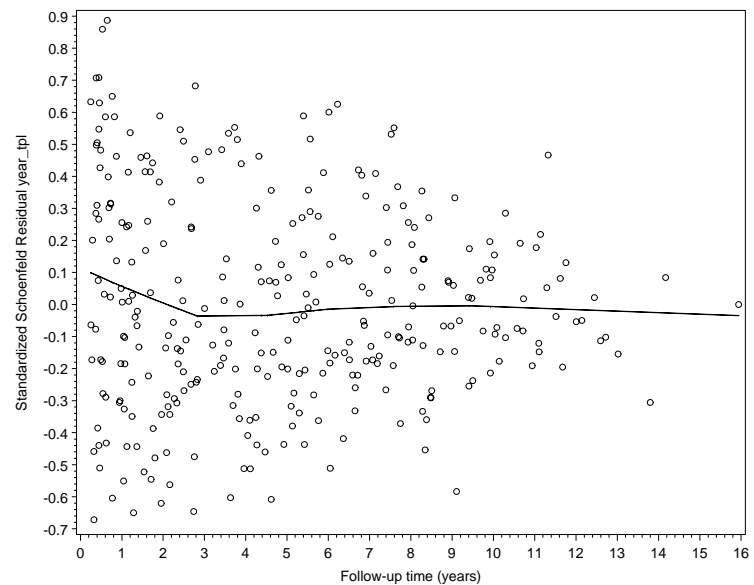
Tests for interactions with log(time):

Interactions with log(_time_)		
var1	raw_p	False Discover Rate p-value
immg90	0.59811	0.84732
noCA_DA1	0.34117	0.65471
noCA_DA2	0.38512	0.65471
noCA_DA3	0.81311	0.87038
CA_DA1	0.33509	0.65471
CA_DA2	0.68559	0.87038
CA_DA3	0.18365	0.65471
age_tp110	0.81919	0.87038
khk	0.52016	0.80389
cmp	0.25731	0.65471
vascid1	0.36091	0.65471
vascid2	0.11961	0.65471
<b>year_tp1</b>	<b>0.00102</b>	<b>0.00869</b>
dialysezeit	0.79814	0.87038
<b>cholest10</b>	<b>0.00001</b>	<b>0.00018</b>
map10	0.88924	0.88924
diabetes	0.36131	0.65471

Time-dependent effect of cholest: Plot of scaled Schoenfeld residuals



Time-dependent effect of year\_tp1:





Adjusted hazard ratios, accounting for time-dependent effects:

Parameter	Hazard Ratio	Lower 95% CL HR	Upper 95% CL HR	Pr >  t
immg90	0.35014	0.14672	0.83558	0.0181
noCA_DA1	0.71741	0.26129	1.96971	0.5191
noCA_DA2	0.55207	0.21966	1.38752	0.2063
noCA_DA3	0.47104	0.17464	1.27050	0.1370
CA_DA1	0.80893	0.51969	1.25917	0.3476
CA_DA2	0.54769	0.34182	0.87754	0.0123
CA_DA3	0.75755	0.48345	1.18705	0.2256
age_tpl10	1.65050	1.48220	1.83791	<.0001
khk	1.05500	0.73589	1.51249	0.7689
cmp	1.23387	0.84578	1.80005	0.2737
vascid1	1.17316	0.79100	1.73994	0.4243
vascid2	1.42151	1.01745	1.98603	0.0394
dialysezeit	1.03518	0.97382	1.10041	0.2674
y1tpl_to1	1.03479	0.96183	1.11330	0.3593
y1tpl_from1	0.91824	0.87880	0.95945	0.0001
cholest10_to3	0.96323	0.93431	0.99306	0.0162
cholest10_from3	1.02404	1.00402	1.04445	0.0184
map10	1.01582	0.98473	1.04789	0.3210
diabetes	1.43537	1.08739	1.89472	0.0107

Interactions with donor age and IS:

variable	with_variable	Pr > Chi-Square	DF	False Discovery Rate p-value
age_tpl10	immg90 noC...	0.8054	7	0.8949
khk	immg90 noC...	0.5958	7	0.7448
vascid1	immg90 noC...	0.9781	7	0.9781
vascid2	immg90 noC...	0.1072	7	0.4860
dialysezeit	immg90 noC...	0.1458	7	0.4860
year_tpl	immg90 noC...	0.2775	7	0.5297
cholest10_bis3	immg90 noC...	0.3433	7	0.5297
cholest10_ab3	immg90 noC...	0.2487	7	0.5297
map	immg90 noC...	0.3708	7	0.5297
diabetes	immg90 noC...	0.0858	7	0.4860